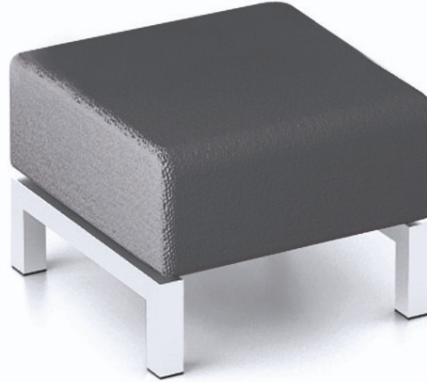
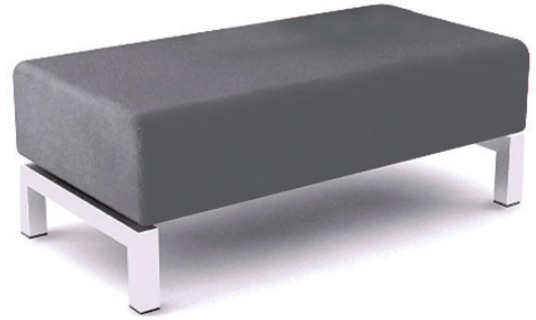




Take Off
Product Data Sheet



Take Off Product Data Sheet



Designed to conform to:

BS EN 16139:2013– Strength, durability and safety for Non-Domestic seating.

BS EN 1022: 2005 – Domestic furniture. Seating. Determination of stability.

Manufactured in accordance to:

ISO 14001: 2004 - Environmental Management Systems.

BS EN ISO 9001: 2008 - Quality Management Systems.

Materials:

The framework is produced from a combination of hardwood and softwood timber and wood-based sheet materials for strength and stability, and to form the smooth ergonomic shapes. This frame is then covered with CMHR (Combustion Modified High Resilience) flexible foam for comfort and complying with flammability `Crib 5` requirements. Metal frame work is available in a selection of paint finishes.

Upholstery fabrics for seat and back pads are available in a wide range of patterns, colours and weaves. They are produced and supplied at a minimum of `Crib 5` flame retardancy level; suitable for contract use in public areas.

Heritage:

Over thirty years of in-house manufacturing experience of this type of furniture supplied successfully into educational establishments throughout the U.K.

Considerations:

- Available in a selection of fabric textures and colour ways for choice.
- Available with a choice of leg paint finishes.
- Non-removable cushions.
- Smooth upholstery lines to promote longevity of use and reduce ware.

Gresham Office Furniture Limited

Head Office

Platinum Park | Lynstock Way | Horwich | Bolton | BL6 4SA
Tel: 01204 664422 | Fax: 01204 664433 | Email: info@gof.co.uk

London Showroom

65 Clerkenwell Road | London | EC1R 5BL
Tel: 020 7242 5709 | Email: londonshowroom@gof.co.uk

Visit us online at www.gof.co.uk

GRESHAM
Working with you